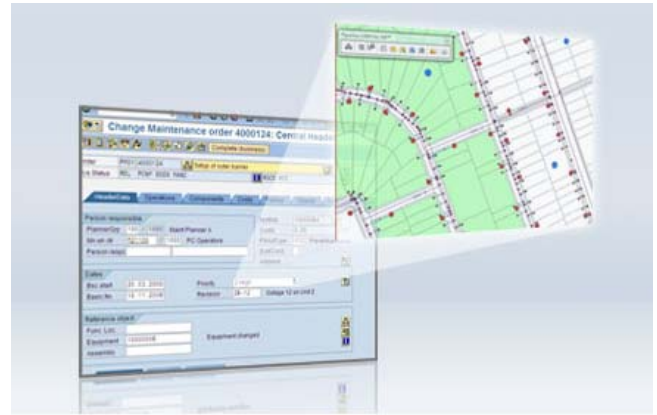


GEO apps

by Pipeline Software

“We put SAP on the map”



GEO Work Management (GEO WM)

Add a geospatial perspective to SAP work management

Pipeline’s GEO Work Management solution integrates SAP Plant Maintenance (PM) with ESRI GIS enabling organizations to optimize their maintenance and field service business processes.

Overview

Pipeline Software’s GEO Work Management (GEO WM) solution enables your ESRI GIS map users to interact with SAP work management transactions and data directly from their GIS map. By providing an integrated view of assets, features, notifications, work orders and work status on the map, GEO WM enables your workforce to make faster, better decisions and improve work coordination .

Key Features

Select features of the GEO WM solution include:

- Create, and put in process, SAP notifications against map features
- Search for and view work orders, notifications and work schedule data for map features
- View, release, and TECO work orders from the map
- View SAP work orders based on geography
- Supports third-party work scheduling tools

Primavera Scheduling Option

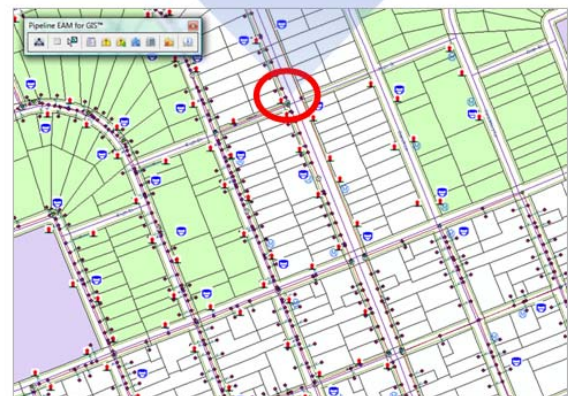
Some organizations use Primavera to manage resource assignments and schedule their maintenance work. GEO WM provides out-of-the-box support for Primavera-scheduled work by providing a composite view of SAP and Primavera-based work and schedule data for features against the map.

(Illustration to right: Highlight map features then select “View Work Orders” on the Pipeline toolbar to see open work orders directly from SAP for the selected features.)

Order#	4000891	Order Type	PM03
Short Text	Flush out line - nearby repair		
Notification	10000950	Priority	3
Basic Start	07/23/2009	Basic Finish	07/27/2009
Main Work Center	M20100	PM Activity Type	003
System Status	CRTO MANC	User Status	
Planner Group	100	Total Costs Actual	USD 0.00

Op	Plant	Work Center	Description	Planned Duration	No of Capacities	Planned Work	Actual Work	Actual Start	Actual End
0010	1000	M20100	Attach hose	2.0 HR	4	8.0 HR	0		
0020	1000	M20100	Open valve and drain	2.0 HR	1	2.0 HR	0		

Item	Material	Description	Req. Qty	Operation
0010	MAT100	test	99.000 KG	0010
0020	NIS70045	test.	88.000 KG	0010



Primary Benefits

The GEO WM solution creates many benefits for your customers and organization including:

Increased staff productivity

- Single unified management environment
- Execute simplified SAP transactions from the map
- Support geographic/visual oriented business processes

Improved resource utilization

- Geographic view of planned/scheduled work
- Assets and their associated work orders viewed at their exact location on a GIS map

Reduce time to locate and fix

- Attach notifications to the right asset and the right feature the first time
- Identification and subsequent dispatch to the right asset at the right location the first time
- Eliminate dispatches to out of area notifications

Improve customer service and reduce costs

- Better, faster decision making with expanded visibility of SAP data on the map

General Area			
FLOC Id	TANK-001-AB-12	Object Type	1000
Description	Water tank	Startup Date	
Manufacturer	Tank Masters	Mfg Country	US
Model Number	T-1001	Mfg Part Number	
Mfg Serial Number		Category	M
User Status		System Status	CRTE
Location Area			
Maintenance Plant	1000	Work Center	M20200
Sort Field	GIS		
Organization Area			
Company Code	1000	Business Area	0001
Planning Plant	1000	Planning Group	100
Class			
HOMEANDSECURITY	Threat level	Value	Green
WATERTANK	Height above ground	Value	300 Foot
WATERTANK	Lining type	Value	Glass

(Illustration above: Real-time inquiry of SAP Functional Location (FLOC) record for a selected map feature.)

Pipeline GEO-Apps

Pipeline Software's GEO-Apps suite of solutions are focused on adding geospatial capabilities to SAP. To learn more about these geospatial solutions for SAP please visit the Pipeline GEO team's website at www.pipeline-geo.com or call 888-SAP-GIS4 (888-727-4474).

About Pipeline Software

Pipeline Software is a leading provider of SAP data integration solutions for organizations with asset-intensive and project-intensive business models. Pipeline Software is focused exclusively on the needs of SAP users. Our solutions are used by industry leaders in energy, utilities, transportation, engineering construction, public works, manufacturing, and defense world-wide including members of the Global 1000.

Contact Information

Pipeline Software
 2850 Red Hill Ave
 Suite 110
 Santa Ana, CA 92705
info@pipelinesoftware.com
 +1 949.296.8375
www.PipelineSoftware.com



Notification Header							
Notification No.	10000950	Notification Type	Malfunction report				
Description	Flush out line - nearby repair						
FLOC	Customer						
FLOC Description							
Equipment	10000142	Priority	Medium				
Equipment Description	Hydrant						
Requested Start	02/27/2009	Requested End	03/01/2009				
Notification Date	02/26/2009	Notification Time	1:51:17 AM				

Notification Items							
One item found.							
Item Number	Code Group	Part of Object	Object Part	Code Group Problem	Prob. Damage Code	Short Text	Notif Text
0001	PM1	Object part 2	2	PM2	A	Damage A	

Notification Causes							
One Cause found.							
Item Key	Sort Num	Code Group	Short Text	Cause Code	Code Desc	Created By	Created On
0001	0001	QM		02	Repair	SSMITH	02/26/2009

Notification tasks							
One Task found.							
Item Num	Code Group	Task Code	Task Code Desc	Short Text	Status	User Status	
0001	QM-G3	0006	Rework	first task	TSOS		

(Illustration above: Real-time inquiry of SAP Notification for a selected map feature.)