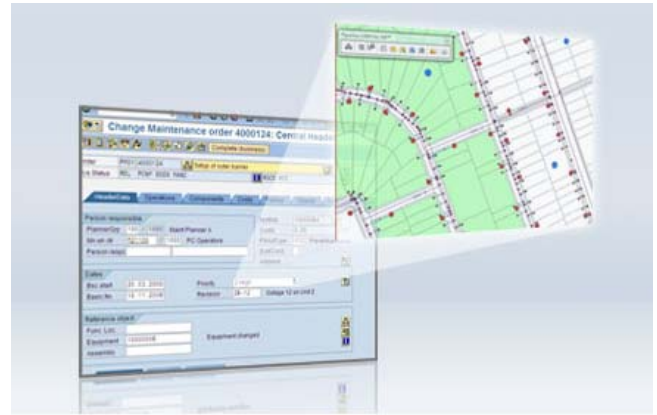


GEO apps

by Pipeline Software

“We put SAP on the map”



GEO Projects

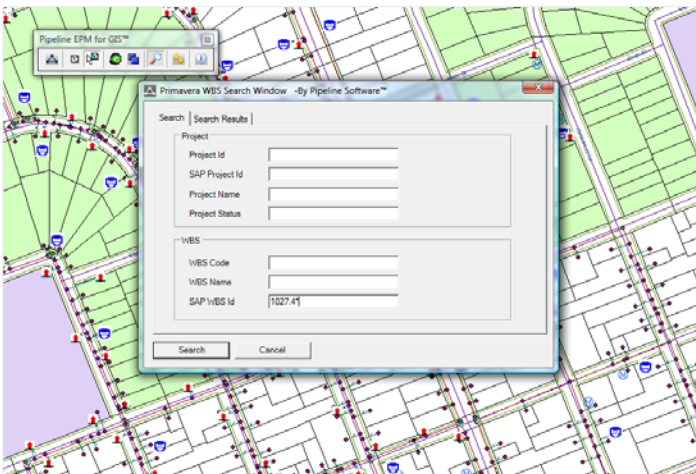
Add geospatial capabilities to SAP Project System (PS)

Pipeline’s GEO Projects solution enables a new level of collaboration, coordination and visibility across enterprise engineering, capital and maintenance projects based on a geospatial view of key project data.

Overview

Pipeline’s GEO Projects solution enables engineering, capital and maintenance project teams to lay their projects out on the GIS map and later connect their map features with SAP project and WBS elements.

This enables a holistic geospatial view of all projects and maintenance work and creates visibility to project budgets, resources, schedules, and work activities on the map.



(Illustration: Highlight map features then select “Link WBS Button” on Pipeline toolbar to search for SAP Project and WBS elements..)

Key Features

Select features of the GEO Projects solution include:

- Find, view and link SAP project and WBS elements to features on the map
- View extended project WBS structure associated with a map feature
- View SAP project budgets, schedules, resources, work orders, engineering change orders and purchase orders linked to a map feature
- Geo visualization of project under/over budget, on/off schedule, scheduled completion dates and issues
- Supports SAP/Primavera hybrid project management solutions

Primary Benefits

GEO Projects provides the following benefits to your users and your organization:

Improved collaboration between capital , engineering and maintenance project groups

- Geospatial visibility into project planning provides new insight into activity schedule optimization
- Joint project and maintenance visibility enables new levels of collaboration
- Workforce visibility into purchase order, work order and change order information

Improved reporting and issue resolution

- Better, faster decision-making with geospatial visualization of SAP/Primavera project data
- Faster identification of geographically oriented project issues

WBS Element Details

Project

Name	Demo SAP WBS to P3e Transport Scenario
Status	Active
Source	P3E

WBS Element

Name	Engineering
Primavera WBS	SSPS1027.1027.A.2
SAP Project/WBS	1027/1027.A.3

Dates

Planned Start		Planned Costs	0.0
Planned Finish	08/04/2009	Actual Costs	0.0
Actual Start		Committed Costs	0.0
Actual Finish			

Issues

3 Issues found, displaying all Issues.

Name	Status	Priority	Manager	Identification	Resolution	Reported By	Threshold	Lower	Upper	Actual
Anil Test Issue 1	IS_On_hold	PT_Top	Pipeline Demo	08/10/2009	08/31/2009	agothermal				
Anil Test Issue 2	IS_Open	PT_Normal	CRM Demonstration	09/02/2009		agothermal				
Anil Test Issue 3	IS_Open	PT_Normal	CRM Demonstration	09/02/2009		agothermal				

Activities

3 Activities found, displaying all Activities.

Id	Name	Status	Actual Start	Actual Finish	Planned Start	Planned Finish	Early Start	Early Finish	Remaining
A1010	Test	Not Started			08/04/2009	08/04/2009			8.0
A1020	Test2	Not Started			08/04/2009	08/04/2009			8.0
A1030	Test2	Not Started			08/04/2009	08/04/2009			8.0

(Illustration: Real-time view of SAP/Primavera project data including budgets, dates, schedule and activity details. If Primavera option is activated, system will show composite view that includes schedule, resources, and issues from Primavera.)

Project Details

Project Information

Name	Demo SAP WBS to P3e Transport Scenario	SAP Project Id	
Status	Active	Manager	CRM Demonstration
Planned Start	08/04/2009	Planned Finish	
Actual Start		Actual Finish	

WBS Structure

24 WBS found, displaying all WBS.

SAP WBS	Code	Name	SAP Project Id	Planned Start	Planned Finish	Actual Start	Actual Finish	Planned Costs	Actual Costs	Committed Costs
	SSPS1027.1027.1.1.1	(New WBS)			08/04/2009			0.0	0.0	0.0
1027	SSPS1027.1027	SAPDIC-DA Dissolution	1027		08/04/2009			28880.04	0.0	0.0
1027.1	SSPS1027.1027.1	Early Purchasing	1027		08/04/2009			480.0	0.0	0.0
1027.1.1	SSPS1027.1027.1.1	Early Purchasing Tooling	1027		08/04/2009			0.0	280.0	0.0
1027.1.2	SSPS1027.1027.1.2	Early Purchasing Materials	1027		08/04/2009			0.0	0.0	0.0
1027.2	SSPS1027.1027.2	Ship Fabrication	1027		08/04/2009			2300.0	0.0	0.0
1027.2.1	SSPS1027.1027.2.1	Area 1	1027		08/04/2009			1100.0	2520.0	0.0
1027.2.2	SSPS1027.1027.2.2	Area 2	1027		08/04/2009			400.0	0.0	0.0
1027.2.3	SSPS1027.1027.2.3	Area 3	1027		08/04/2009			0.0	0.0	0.0

(Illustration: Real-time view of entire SAP/Primavera project and all related WBS associated with selected map features.)

Pipeline GEO-Apps

Pipeline Software's GEO-Apps suite of solutions are focused on adding geospatial capabilities to SAP. To learn more about these geospatial solutions for SAP please visit the Pipeline GEO team's website at www.pipeline-geo.com or call 888-SAP-GIS4 (888-727-4474).

About Pipeline Software

Pipeline Software is a leading provider of SAP data integration solutions for organizations with asset-intensive and project-intensive business models. Pipeline Software is focused exclusively on the needs of SAP users. Our solutions are used by industry leaders in energy, utilities, transportation, engineering construction, public works, manufacturing, and defense world-wide including members of the Global 1000.

Contact Information

Pipeline Software
 2850 Red Hill Ave
 Suite 110
 Santa Ana, CA 92705
info@pipelinesoftware.com
 +1 949.296.8375
www.PipelineSoftware.com

