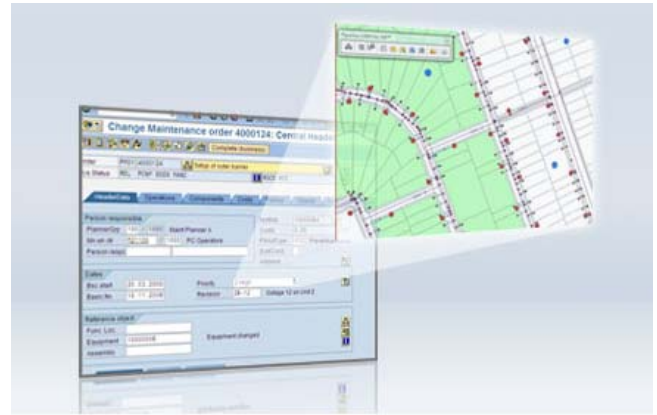


GEO apps

by Pipeline Software

“We put SAP on the map”



GEO Asset Data Management (GEO ADM)

Synchronize asset data between SAP and ESRI GIS

Pipeline’s GEO Asset Data Management solution provides a single unified interface for asset data management between SAP and ESRI GIS to enable streamlined asset-related business processes and eliminate lost, duplicate and obsolete asset data.

Overview

Pipeline GEO Asset Data Management (GEO ADM) enables organizations to easily and efficiently keep their SAP and GIS asset databases in sync.

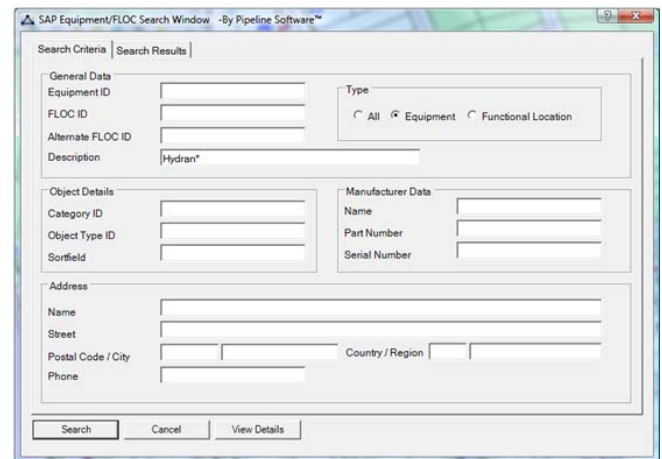
GEO ADM includes modules for both real-time asset linking from the map to SAP as well as a server module for executing mass data import/exports and asset data synchronization jobs between SAP and ESRI geospatial databases.

Key Features

The GEO ADM application provides the complete range of features required to create a single environment for asset data management, including:

- Find and view SAP equipment and/or functional locations (SAP assets) from the map
- Link SAP assets to map features
- View and modify SAP asset attributes from the map
- Automatically update SAP when GIS features are created or modified
- Automatically update GIS when SAP assets are modified
- Mass import of assets SAP from GIS database
- Scheduled synchronization of key data elements

(Illustration to right: Highlight map features then select “Search SAP Assets” to view and link SAP equipment and functional locations to your map features)



Primary Benefits

The single management environment created by GEO ADM has many benefits for your customers and organization including:

Increase asset data integrity

- SAP and GIS databases reflect same data
- Eliminate lost, duplicate and obsolete asset data
- Support reliable reporting and decision making

Increase user productivity

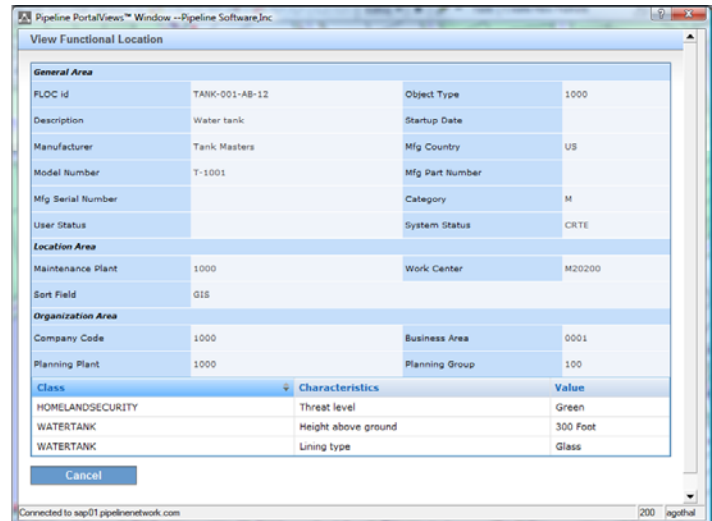
- Find SAP asset data instantly from the map
- View equipment maintenance history from the map
- Create/update SAP assets from the map
- Dynamically link map features to SAP assets in real-time

Increase system acceptance and lower training costs

- Users interact with SAP data directly from ESRI map using simple interfaces

Lower data maintenance costs

- Data maintained in one system
- Updates and synchronizes data automatically
- Eliminate manual data entry errors



General Area			
FLOC id	TANK-001-AB-12	Object Type	1000
Description	Water tank	Startup Date	
Manufacturer	Tank Masters	Mfg Country	US
Model Number	T-1001	Mfg Part Number	
Mfg Serial Number		Category	M
User Status		System Status	CRTE
Location Area			
Maintenance Plant	1000	Work Center	M20200
Sort Field	GIS		
Organization Area			
Company Code	1000	Business Area	0001
Planning Plant	1000	Planning Group	100
Class		Characteristics	Value
HOMELANDSECURITY		Threat level	Green
WATERTANK		Height above ground	300 Foot
WATERTANK		Lining type	Glass

(Illustration: Real-time inquiry of SAP Functional Location (FLOC) record for a selected map feature.)

Pipeline GEO-Apps

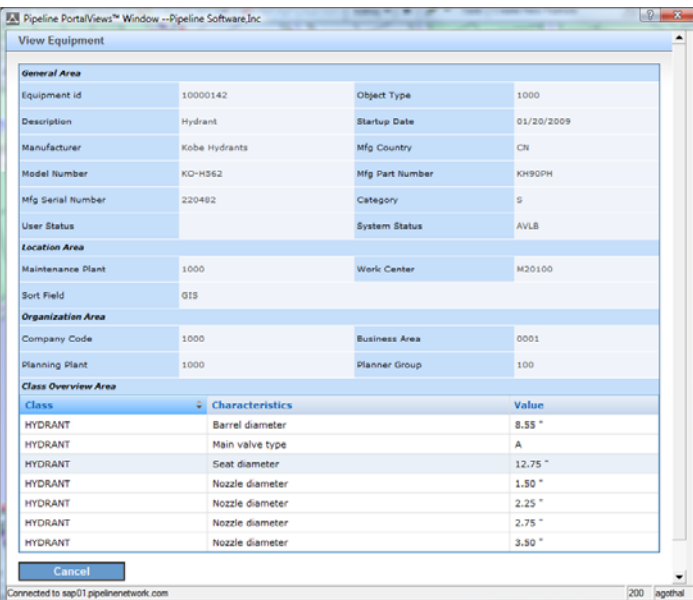
Pipeline Software's GEO-Apps suite of solutions are focused on adding geospatial capabilities to SAP. To learn more about these geospatial solutions for SAP please visit the Pipeline GEO team's website at www.pipeline-geo.com or call 888-SAP-GIS4 (888-727-4474).

About Pipeline Software

Pipeline Software is a leading provider of SAP data integration solutions for organizations with asset-intensive and project-intensive business models. Pipeline Software is focused exclusively on the needs of SAP users. Our solutions are used by industry leaders in energy, utilities, transportation, engineering construction, public works, manufacturing, and defense world-wide including members of the Global 1000.

Contact Information

Pipeline Software
2850 Red Hill Ave
Suite 110
Santa Ana, CA 92705
info@pipelinesoftware.com
+1 949.296.8375
www.PipelineSoftware.com



General Area			
Equipment id	10000142	Object Type	1000
Description	Hydrant	Startup Date	01/20/2009
Manufacturer	Kobe Hydrants	Mfg Country	CN
Model Number	KO-H562	Mfg Part Number	KH90PH
Mfg Serial Number	220492	Category	S
User Status		System Status	AVLB
Location Area			
Maintenance Plant	1000	Work Center	M20100
Sort Field	GIS		
Organization Area			
Company Code	1000	Business Area	0001
Planning Plant	1000	Planner Group	100
Class Overview Area		Characteristics	Value
HYDRANT		Barrel diameter	8.55 "
HYDRANT		Main valve type	A
HYDRANT		Seat diameter	12.75 "
HYDRANT		Nozzle diameter	1.50 "
HYDRANT		Nozzle diameter	2.25 "
HYDRANT		Nozzle diameter	2.75 "
HYDRANT		Nozzle diameter	3.50 "

(Illustration: Real-time inquiry of SAP Equipment record for a selected map feature.)